

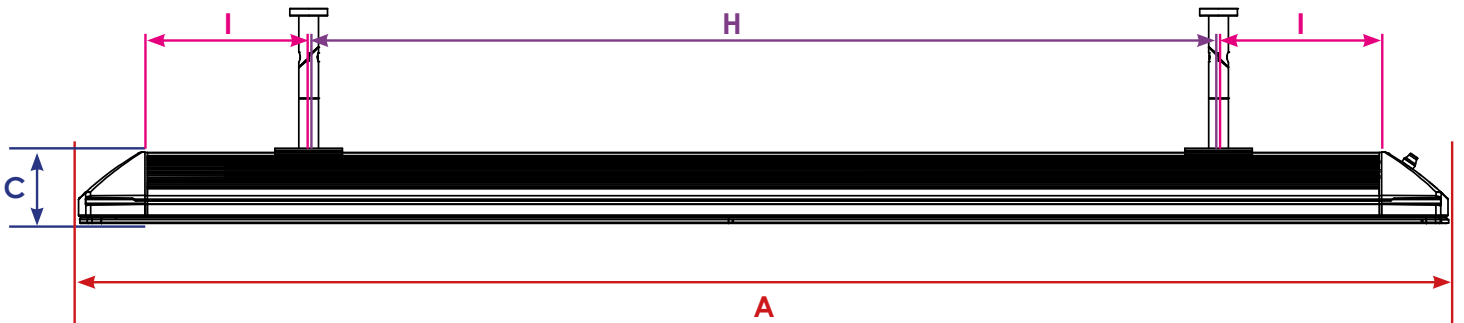
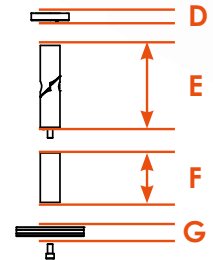
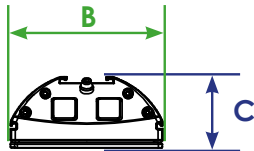
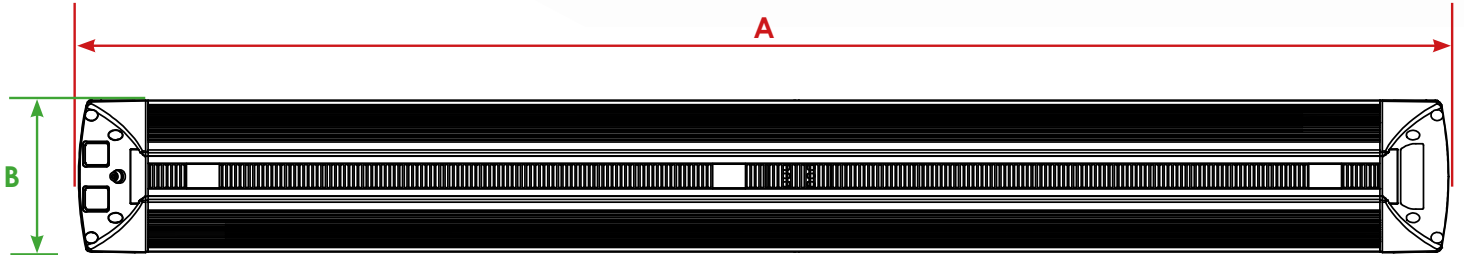
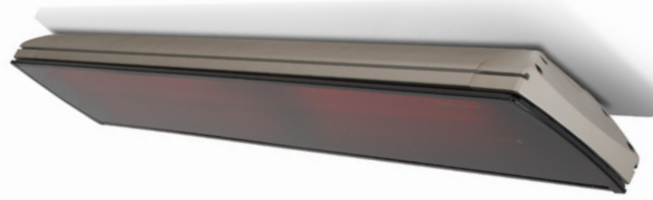
TECHNICAL DATA

HEATSCOPE Vision ambient heater / US

Voltage	208-240 VAC ~ – 50/60 Hz
Power	1600 W / 2200 W / 3200 W 5460 BTU / 7505 BTU / 10,920 BTU
Amperage	6.96 A / 9.57 A / 13.91 A
Cable	43.3 inch / 3 x 0.00233 inch ² oder 43.3 inch / 4 x 0.00233 inch ²
Temperature surface	530-610 °F
Temperature housing	max. 215 °F
Filament temperature	2190-2370 °F
Colour temperature	1550-1650 K
max. power in	ca. 15 sec.
Visible light	< 300 Lux
recommended installation height	min. 5.9 ft. / max. 8.2 ft.
IP safety class	IP X4 (well covered or with optional weather shield)
Control	manually/external: ON/OFF + 100%, 50% or: via IR-Remote Control ON/OFF + 100%, 50%



HEATSCOPE VISION



	A	B	C	D	E	F	G	H	I
MHS-VE1600 MHS-VT1600	31.89 inch	7.25 inch	3.55 inch	0.36 inch	3.94 inch	2.37 inch	0.44 inch	≤ 11.82 inch	≥ 6.89 inch
MHS-VE2200 MHS-VT2200	45.67 inch							≤ 25.60 inch	≥ 6.89 inch
MHS-VE3200 MHS-VT3200	65.36 inch							≤ 45.28 inch	≥ 6.89 inch